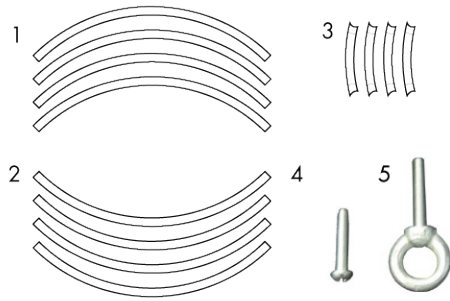


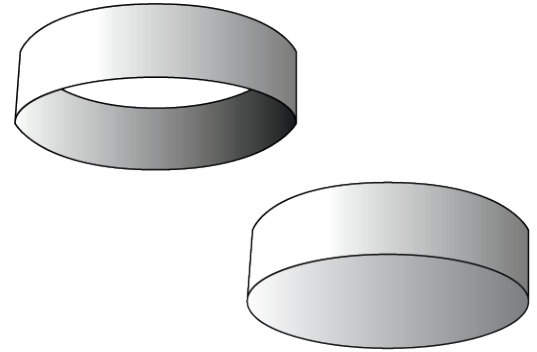
EuroFit Fabric Hanging Banner Displays - Round Small

Product Parts (4FT HARDWARE SHOWN)

- 1 - Top Frame Bars* (x4)
- 2 - Bottom Frame Bars* (x4)
- 3 - Vertical Bars* (x4)
- 4 - Bottom Bolts (x4) (6FT = x9)
- 5 - Eye Bolts (x4) (6FT = x3)



* 6FT Display includes 6 of each Bar



Hanging Cables not included.

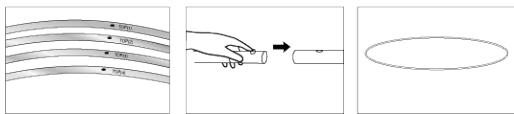
Most Convention Centers will require you to use their hanging hardware.

Display Set-Up Recommended for indoor use only.

NOTE: WHEN POSITIONING FABRIC AROUND THE FRAME CAREFULLY LIFT AND REPOSITION- DRAGGING FABRIC CAN CAUSE SNAG.

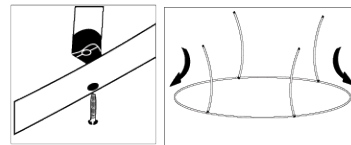
Step 1

All Frame pieces should be labeled. Connect all the bars into two circles by placing the tapered end of the 1st bar into the large end of the next bar until the release button snaps into place.



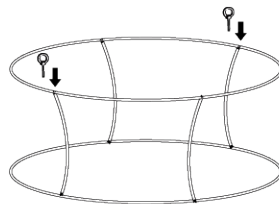
Step 2

Place one of the assembled circles on the floor with the release buttons facing up. Align each Vertical Bar (3) with the center holes of the circle. With the curve of the Vertical Bars towards the center, fasten them in place using the Bottom Bolts (4).



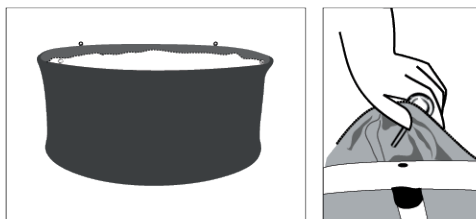
Step 3

Place the other assembled circle on top to create unit. Place a few Top Eye Bolts (5) in to secure briefly.



Step 5

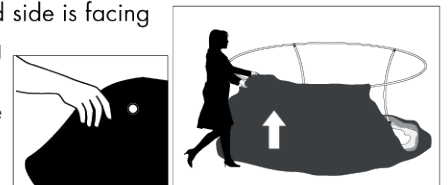
Secure the outside of the Fabric Graphic to Frame by feeding the Eye Bolts (5) into the hole from the Fabric Graphic and then through the hole in the Top Frame Bars (1). Tighten into the top circle at each of the Vertical Bar (3) locations.



Step 4

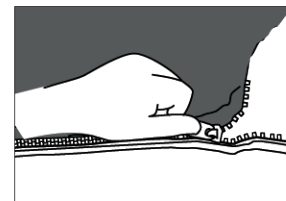
Unzip your graphic and place the bottom circle within the graphic.

NOTE: make sure printed side is facing out and graphic is facing up. Locate the reinforced holes along the top edge of the Graphic, and line them up with each Vertical Bar (3).



Step 6

With the outside of the Fabric Graphic now connected to the Frame, zipper together the inside of the Fabric Graphic to the outside of the Fabric Graphic.



Hanging Cables not included.

Most Convention Centers will require you to use their hanging hardware.

Storage and Care

Place all product parts into Carry Case and store in a cool dry location.

Machine wash on gentle cycle using mild detergent. Tumble dry on low heat setting only. Do Not dry Clean, Do Not iron.